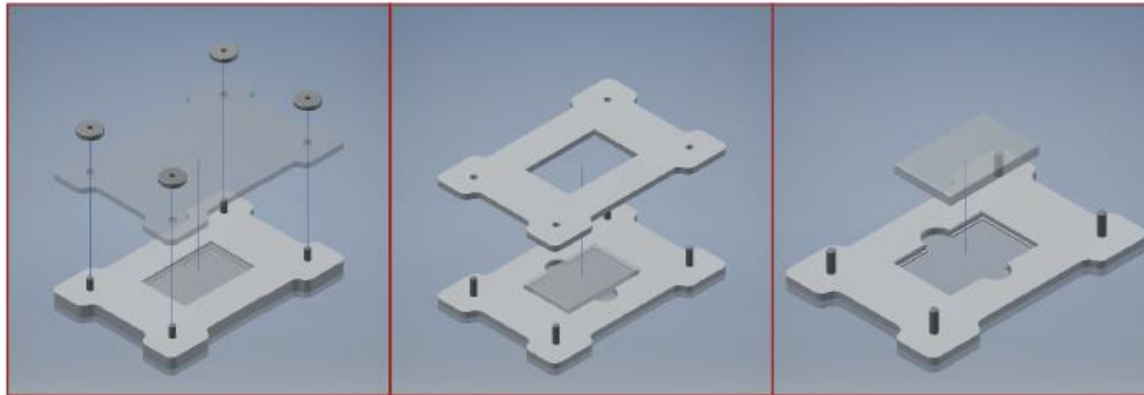


Guidelines

for safe unpacking



Please wear gloves, head cover, and face mask when working with gratings. Cleanroom handling ensures long term stability and performance.



1. Please unfasten the four nuts, and remove the upper transparent polycarbonate cover.

2. Please remove the upper POM frame (white).

3. Please remove the grating carefully from the lower POM frame.

The grating-side is pointing downwards when packaged by Gitterwerk.

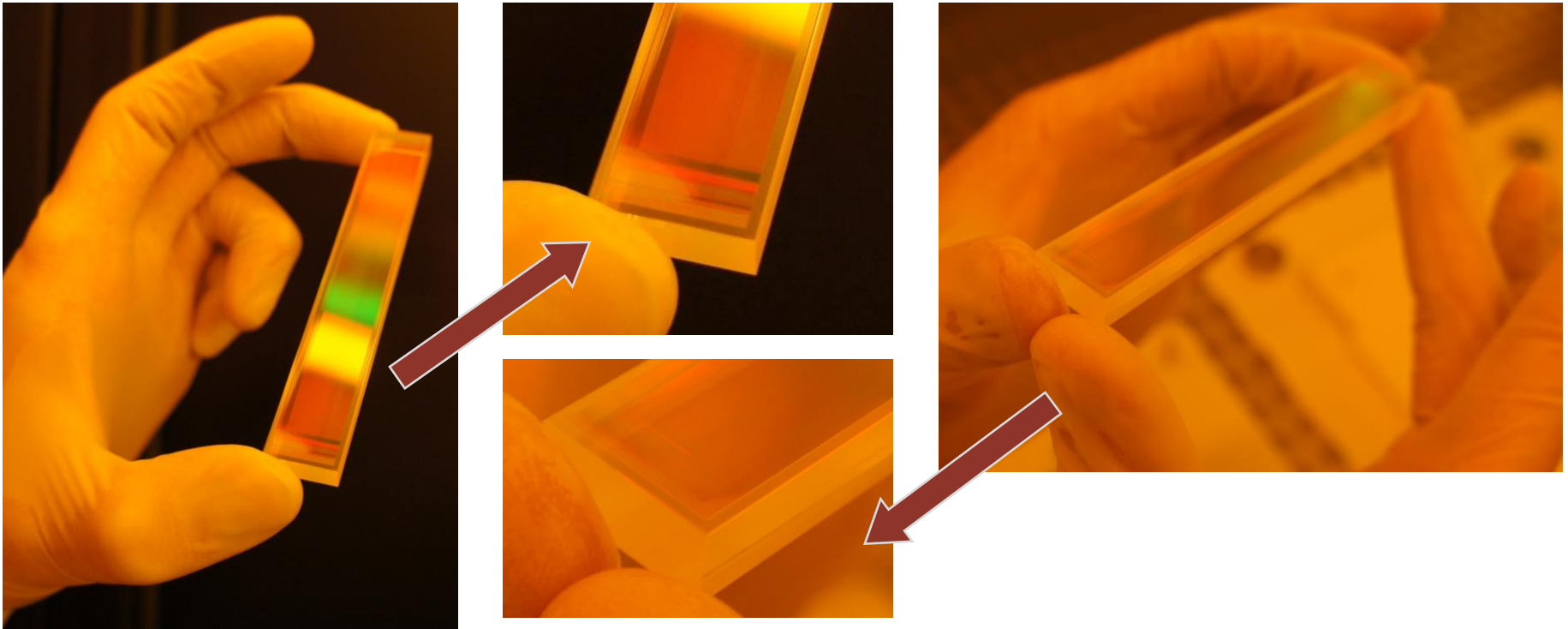
Identifying the grating side

Remember!

The grating side is always pointing downwards when packaged by Gitterwerk!

The grating side can be identified easily by the strong contrast to the unstructured area surrounding the quality area.

In the following images the grating area points upwards towards the camera.



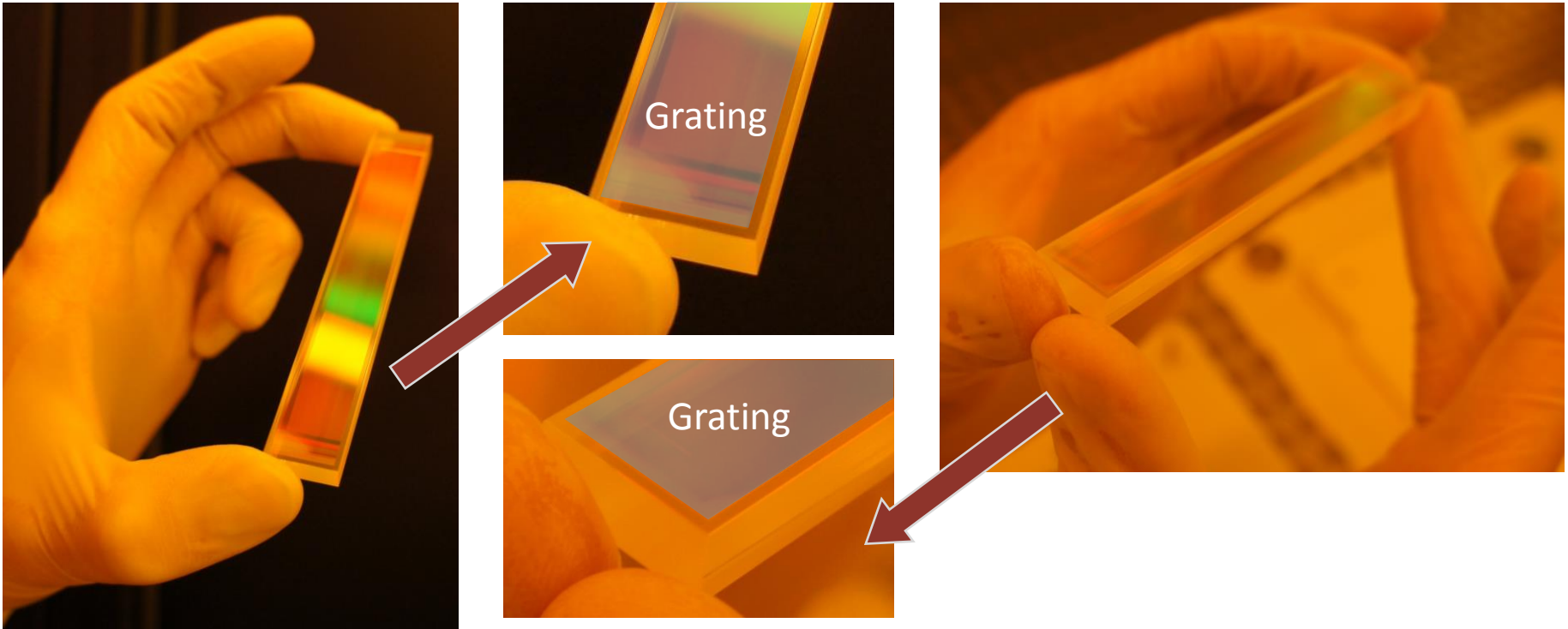
Identifying the grating side

Remember!

The grating side is always pointing downwards when packaged by Gitterwerk!

The grating side can be identified easily by the strong contrast to the unstructured area surrounding the quality area.

In the following images the grating area points upwards towards the camera.



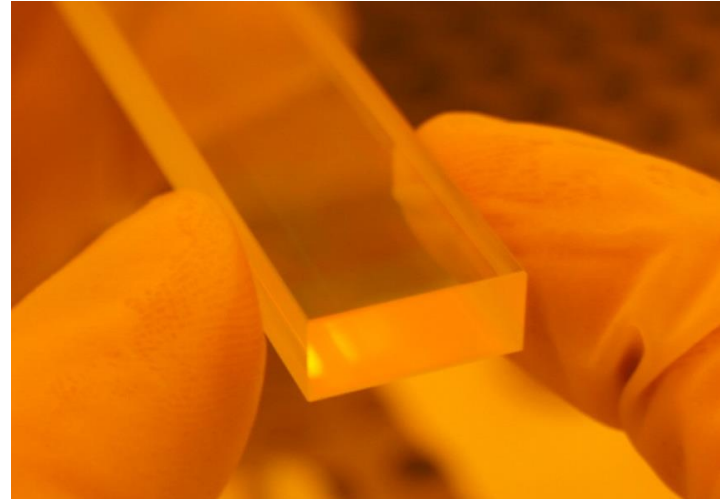
Identifying the grating side

Remember!

The grating side is always pointing downwards when packaged by Gitterwerk!

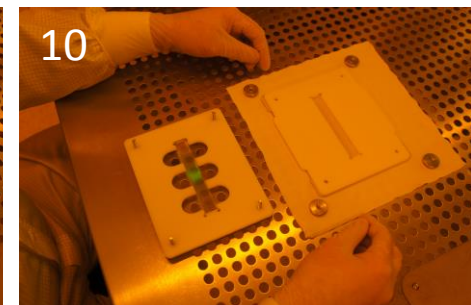
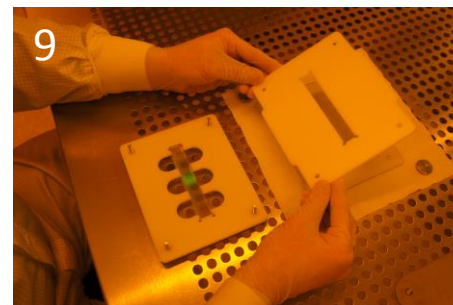
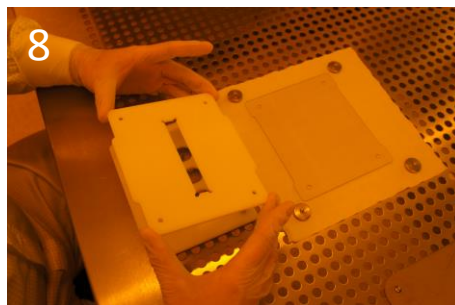
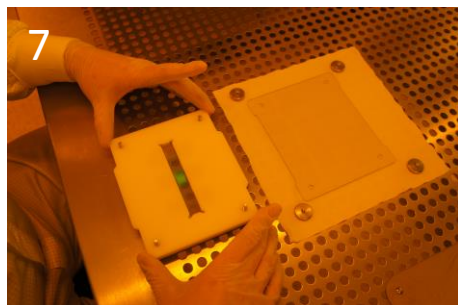
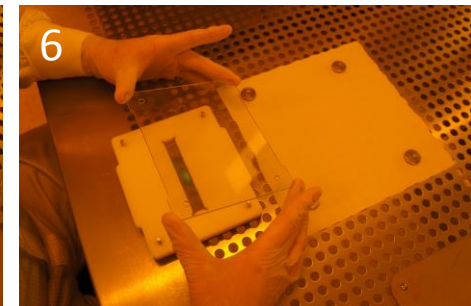
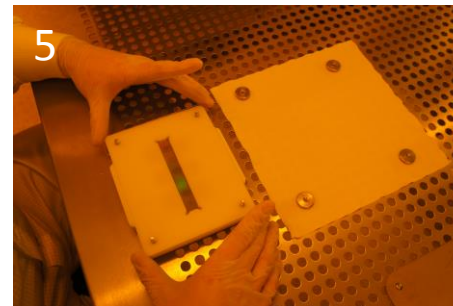
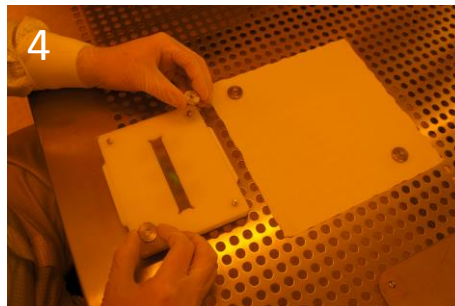
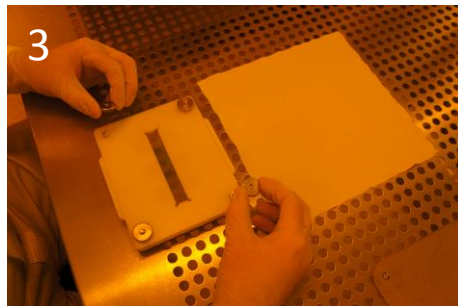
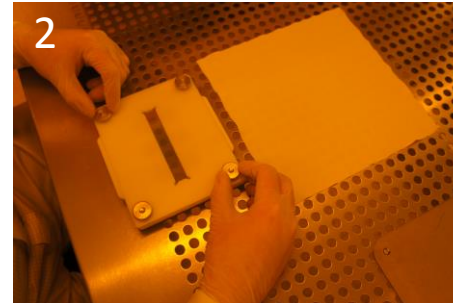
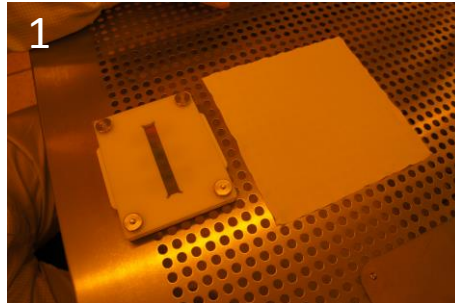


grating side – strong contrast

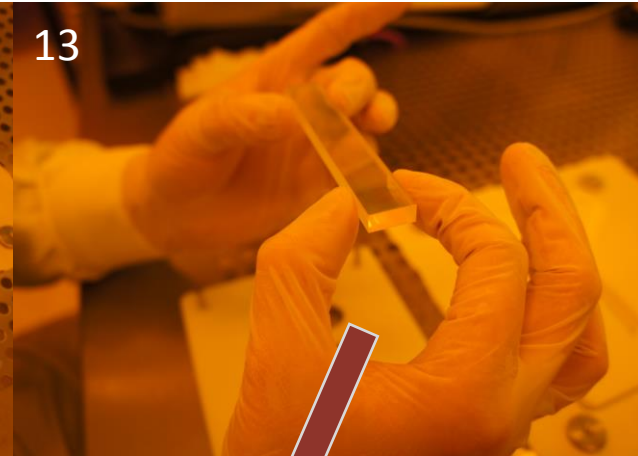
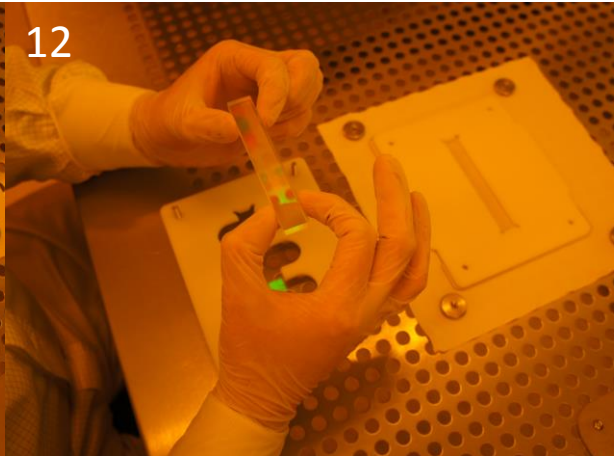
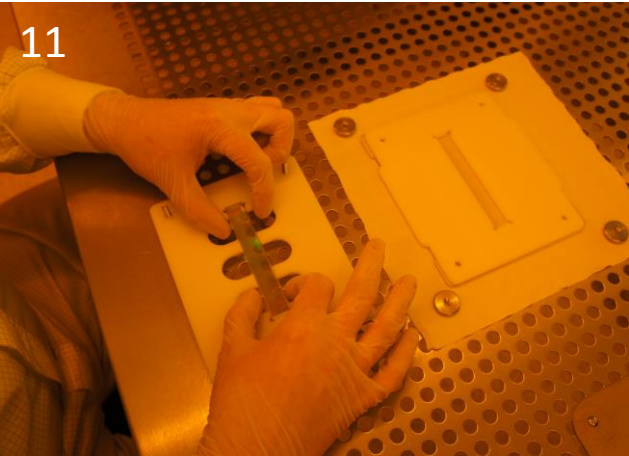


AR Coating side- no contrast

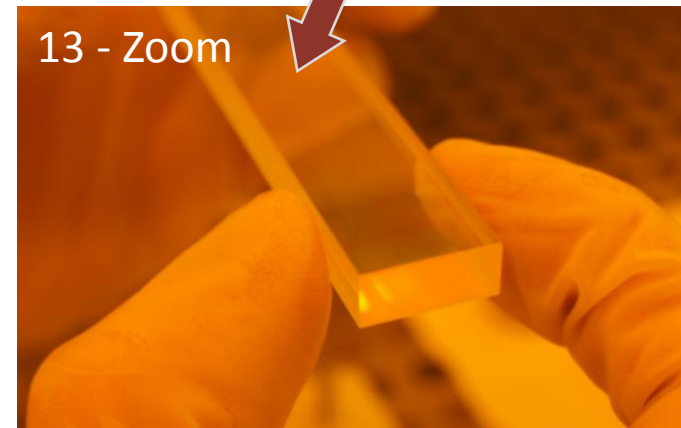
Step-by-Step Part 1



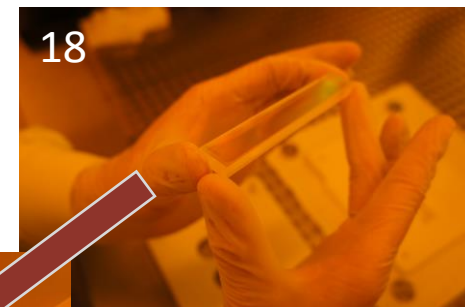
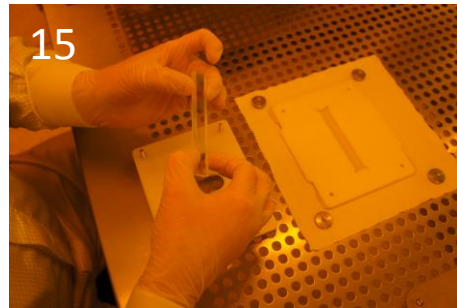
Step-by-Step Part 2



**AR coating facing towards camera.
Notice that the coating extends towards
the edges. There is no contrast as for the
grating side.**



Step-by-Step Part 3



**Grating side facing towards camera.
Notice that there is no grating structure
in the circumference of the quality area.**

**There is a strong contrast between both
areas.**

